

Tim & Rachel Ware
US Missionaries
Church Health

Mission Metro

P.O. Box 1978
DeSoto, TX 75123
214-930-7339 Tcell
214-930-2762 Rcell
Tim@missionmetro.org
Rachel@missionmetro.org




Upcoming Events

Church Consultations /
Retreats
1/14-15, 23-24, 28-29
New Pastor Cohort In NTX
1/17-18

Prayer Requests

Bridges Safehouse client's
fresh start in college
Church consultations &
speaking engagements
City Lift pilot project site

Faith Promises and Donations:

US Missions 
1445 N. Boonville Ave.
Springfield, MO 65802
Add: Ware # 2732949
Also on our website.

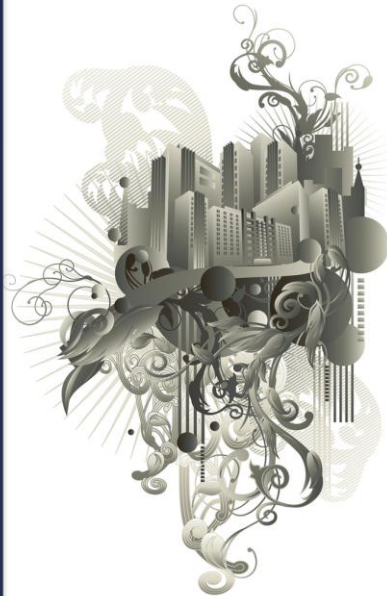
missionmetro.org

missionmetro mark your Metropolis

January 2012

Goal Setter vs. Problem Solver

We joke that we could be the poster child for opposites attract (or maybe just God's sense of humor). After almost 20 years of marriage (June 6th), we are still discovering new ways that we are totally opposite. One of our coaching clients led us to Bobb Biehl's book called **STOP SETTING GOALS If You Would Rather Solve Problems**. Rachel likes a nice list of goals and lists to cross off. Tim would rather tackle a problem that needs to be solved. Rachel would love to avoid the stress of a "problem" and Tim is energized by the challenge. So, we actually make a pretty good team of tackling something and working it through until the list is crossed off. So if you are **annoyed by making New Year's resolutions**, you might just want to forget a goals list and look at problems you feel like the Lord would have you tackle.



City Lift – What if we could strengthen multiple churches of multiple denominations in one area or city to reach its lost?

Some of the problems the Lord has laid on our hearts for 2012:

- Too many churches feel "stuck" and not progressing. *Strategy:* Conduct church health consultations and create a strategic plan that can be coached through over the next year.
- Many ministers feel alone. *Strategy:* Be a friend individually to pastors and their unique situations. Help with the further development of pastoral cohorts.
- Churches are seeing only a low number of lost people coming to know Christ. *Strategy:* Teaching relational evangelism strategies as part of *Church Life's 30-60-90 Evangelism Plan*.
- Spirit of competition among churches instead of Kingdom kinship and cooperation. *Strategy:* Collaboration at pastoral cohorts. *Pilot Project City Lift* - looking for candidate city or area where an *interdenominational* pastoral cohort can be established for strategic church health development and community outreach projects.

A few months ago we felt like the Lord wanted us to make a personal, large financial commitment to a ministry project. We didn't know where the money would come from, but I looked at Tim and said, "That was our Christmas money." We were obedient. Then, we were blown away by your and the Lord's generosity. Thanks for money to buy gifts for kids and family and to go towards the car repair we are getting bids on. Also, Tim had been telling me how much an iPad would benefit him in his meetings & consultations. I told him he better talk to Lord about it because it wasn't coming out of our budgets. Our pastor friends in New Jersey, the Bechtels, bought us each one. (Hint: Obey the Lord.)

Thanks also to our heroes of monthly support in this tough financial time. We believe the Lord will **overwhelmingly** bless you too. You are the ones that keep our kids fed, that let Rachel teach life-skills to homeless pregnant ladies at Bridges Safehouse, that let Tim strengthen the church, and the let us both coach missionaries and leaders currently in six states. If the Lord is calling you to join us and our [support team](#) in strengthening the church of America, be obedient. He will bless you.

